



Office of the Monroe County Surveyor
Trohn Enright-Randolph

Health Services Building
119 West 7th Street
Bloomington, IN 47404
Phone: (812) 349-2570

Dear User,

The following images were obtained in 2017 by the Office of the Monroe County Surveyor from the State Imaging and Microfilm Laboratory at the Indiana State Archives. The field notes and plats for Lawrence County are stored on microfilm Reel 1903 at the Indiana State Archives. Each page provided by the State Imaging and Microfilm Laboratory is approximately 18MB. Our office combined the pages by Township & Range and reduced the resulting pdfs. This process may have caused some degradation in quality. We will provide unreduced images of specific pages if required. Please contact us at 812-349-2570 or at SurveyorsOffice@co.monroe.in.us to request a higher quality image of any specific page.

The pdfs are bookmarked with the original page numbers as assigned by the State Imaging and Microfilm Laboratory.

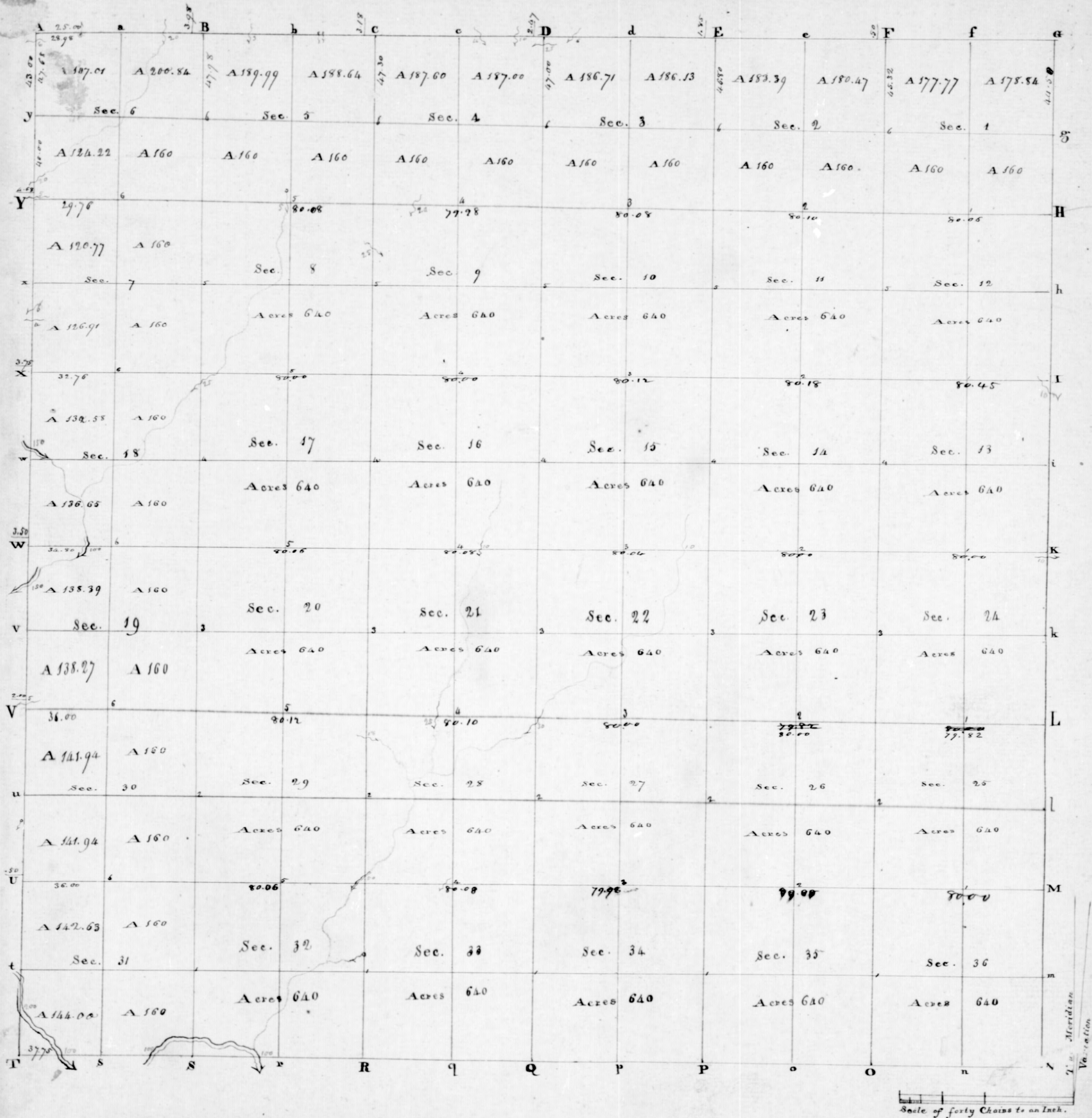
Be prepared to provide the county name, reel number, and the required page numbers when requesting full sized images.

If you would like a DVD of an entire county, please provide us with one DVD per county along with a self-addressed, stamped envelope.

Trohn Enright-Randolph
Monroe County Surveyor

T6N

R2W



Township N° VI North, Range N° II West of 2nd Meridian.

Surveyed by Arthur Henric 1814.

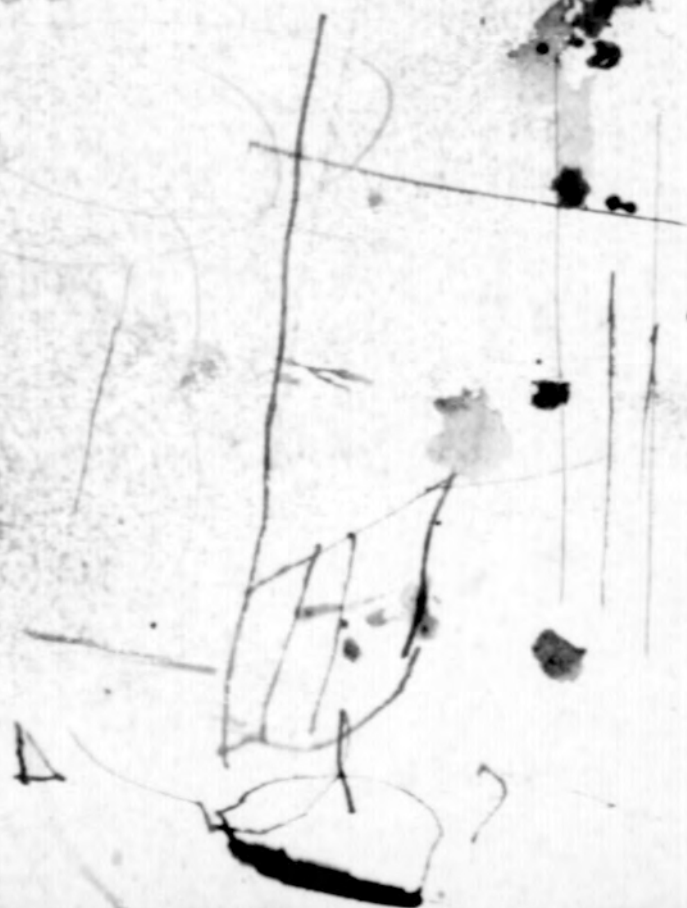
Description of the Soil on the interior Sectional lines.

ORIGINAL
FIELD NOTES

B 241600
Compound

F. 6. N. 2. 2. W. 2. M.

Recorded



1
R2 M J 6 V

North Between 35436

4000 Set hay mill
just ~~from~~ the
section corner
from which a

gun 20 J 42 M 33

8000 Set post corner
of 3536267

24 from a bush
20 d p p M 25 M 25
10 M 3583116

Land Hilly Thirly

Iron bed Oak
& Hickory

2)

R2M9600

Cort Between 25936
 on random
 4000 Set temporary post
 2000 Intersected V88
 line R. M. South
 of the corner
 Land the same

Must Between 25936 on
 true line

4000 Set post at average
 distance on true
 line for 1/4 sec corner
 from a Buck 20
 V82389 Do. 10 S 1268

8000 In corner

3

R2M9600

North Between 25926
 4000 Set hay mile
 post for 1/4 sec
 corner from
~~what~~ what a

Hay 10 V86408
 Do 10 S 581622

2000 Set post corner
 of 25, 26 23824
 from a Buck 20
 V83M59 M. Sec
 at 10 V81630
 Land Robert Linn
 Oak Hay 8
 Buck 1000

41

B 2 M I 6 U

East Between 24825 on
 random
 4000 Set lim pony post
 7982 Intersected &
 Section 45 M
 South of S
 corner land the
 same

West Between 24825
 on true line
 3999 Set hay mill
 post from a
 Logwood post
 36 M -

7982 In corner

B 2 M I 6 U

North Between 23824
 8, 50 Mash 20 Lns
 4000 Set hay mill
 post from
 which a
 Bush 20 50 & 14
 80 12 55 7 M 16
 8000 Set post corner
 of S 13, 14 23824
 from a Poplar
 80 87 6 27 M
 Bush 12 54 56 14
 Land level and
 wet Iron
 Bush gum

6) P2M56 U
 East Britain in 139
 24 on windom
 4000 Set temporary
 post
 8000 Inscribed 288
 South line at
 in corner and
 the same

West Britain 13924
 on true line
 4000 Set post at aver-
 age distance
 on true line
 for 1/4 in corner
 from a Bench 18
 N 20 M 3 Dogwood
 8000 P 28 70 & 22
 in corner

7) P2M56 U
 North Britain in 13924
 4000 Set line mile
 post for 1/4 in
 corner from
 which a

Aug 20 1865 E 16
 Elm 12 V 40 M 33
 8000 Set post corner
 of in 13 12 M 14
 from a Bench 18
 N 67 M 3 Dogwood
 S 40 E 34 M 3
 Land Rover
 Iron Bench
 Oak & Hickory

8

B2 MS6 W

Eoth

Between 12 & 13

on road

40,00

Set trap house

73,00

Branch 10 lbs S, E

80,45

In his tent

& skin 8 lbs

~~South of the~~

South of the corner

Land the same

West

Between 12 & 13

on the line

40 2

Set post at aver

age distance

on line

for the corner

from a point

80,45

24 West 108 lbs

in corner

9

B2 MS6 W

North

Between 11 & 12

46

Set trap

post for the

corner from a

point 6 & 216 29 lbs

~~South of the~~

South of the corner

Land the same

80,00

Set post corner

of the 1, 2 & 11 & 12

from where sugar

10 & 32 & 40 Bush

12 & 56 M 16 lbs

Land the same

B 2 M I 600

East: Between 1812
on random
40,00 Set temporary post
80,06 Intersected at 90
line at the
corner - Bundles
Linn - Buck with
Hickory & Oak

West Between 1812 on
40,03 Set post at same
age distance
for 1/4 sec corner
from o Buck 18
283 & 40 lbs sugar
10 574 M 28 lbs
80,06 In corner

B 2 M I 600

North Between 1812
40,00 Set hay mile
post from a
Buck 8 12 & 32
80 48 & 41 M 28
85,32 Set post on the
North boundary
to the East of the
corner from
a Buck 20
127 M 24 lbs Buck
19 W 28 M 22
Linn's land
The Survey
April 9th 1814

12

R 2 M 96 V

Worth

40,000

Between In 34935

Set hay mill

Post from

Which is

Moak 20 S 20 E 16

Hukoy 12 V 53 E 40

Set post corner

of In 34 35 26 12

from a ~~line~~ Moak 20

or 44 E 22 Brink 20

S 87 E 41 links

Land Hilly

Tinn - Oak Hukoy

ash poplar

80,000

13

R 2 M 96 V

Cost

40,000

8000

Between 358 26 on

random

Set temporary post

Estimated or 85

line 12 M worth

of the corner

Land the same

West

40,000

Between 358

26 on true line

Set post at aver

age distance

on true line

for 1/2 corner

from a Brink

20 S 37 M 24 Aug

- or 57 E 22

20,000

In corner

14

B2 M J 6 or

North

4000

Between 26827

Set hay mill
North for 4000
Corner from a

Bench 10 or 2 M 25

Go 8 S 46 E 14 line

8000

Set post corner
of 2627 22 & 23

from a sugar

or 89 M 44 S 12

or 44 E 25

Land the same

15

B2 M J 6 or

North

Between 23526

on random

4000

Set temporary post

8000

Intervested or 8

line 20 M North

of the corner and

the same and

Timber

North Between 23526

between

4000

Set post at aver

age distance on

line for

from a sugar

10 or 75 M 17 S 12

8000

S 14 E 14

(6)

B 2 M 36 v r

South

Between in 22523

4000

Set temporary post

4000

Set hay mile
post for Yason
corner from a

Cherry 8 M 11 M 25

Go 8 36 69 links

8000

Set post corner of

in 2223 14915

from a Sugar 8

m 37 20 Bush

to 11 M 8 links -

Land Nolen & Jirio

the corner

East

Between in 14923

on random

4000

Set temporary post

8000

Intersected 188

I have 10 M 8 South

of the corner

Land brushy

Thin Oak & Hickory

West

Between in 14923 on

transition

4000

Set post at a

good distance

on true line

for the corner

from a Sugar 8

m 30 637 Bush

20 m 3 M 20

8000

in corner

18
North
4000

B 2 M 56 or

Between 14 & 15

Set hay mill
post for Swan
corner from

Whisk a -

Bank 12 or 10 & 32

July or 10 & 15 M 5 lbs

8000 Set post corner

of 10, 11, 14 & 15

from a Board 10

M 46 lbs Birch 8

or 72 & 16 lbs

Land the same

East

B 2 M 56 or 19

Between 11 & 14 on
random

4000 Set temporary post

8000 Intersected 18 & 9

Thin to the south

of the same land

The same

West

Between 11 & 14 on

4000 Set post at aver

age distance

on true line

for Swan corner

from a Highway

12 & 5. 2 M 3 lbs

but 2 & 71 & 49

8000

in corner

Q 2 M 9 6 W

Worth Between in 10 9 11

32,00 Sugar 18 lbs Bean

4000 Set hay. milk

put for you.

corner from a

Sugar 12 W 17 & 36

Beach 8 5 30 M 2 M

Moak 20 lbs Bean

72,00 3000 Set post corner of

in 2, 3, 10, 11 from

a Dogwood 6 18 20

8 12 20 8 5 33 2 1/2

Laid this same

Q 2 M 9 6 W

East Between in 29 11

on random

4000 Set temporary post

80,10 In distance 1/2 1/2

line 12 lbs South

of 2 corner

Laid this same

Post Between 29 11

on random

4005 Set post at even

age distance

on line line

for you corner

from a Sugar

6 5 57 6 22 Beach

12 M 1 M 2 8

80,10

in corner

Rs 2 M 7 p u

North Beten 253

40,000 Set hay mill

port from
wharfe

South 8 516810 M

London 8 84230

70,000 Wash 24 Ins Dr

86 30 Set port on the

North boundary

485 M carbox

In corner from

a Bank 20 549 M

5 Sugar 10 549

623 M

Land the

Passing

April 10th 1814

Rs 2 M 9 p u

North Beten 33434

40,000 Set hay mill

port from a

Bank 10 South 33

Do 12 50878 11 M

5100 Bank 12 Ins Dr

1

80,000 Set port corner

up in 3 33427 28

from a Bank

18 50828 29 Do

12 535 M 10

Land Haler

Iron Bank

Bank Haler

24

P 2 M 9 6 Or

East

Between 27 9 34 or

4,000

random

Set temporary post

7998

In line of the U.S.

Line of the South

of the corner

Land the same

West

Between 27 9 34 or

true line

3999

Set post at aver-

age distance on

true line for

your corner from

a Sugar 10 or 778

22 holder 92 South

7998

In corner

P 2 M 9 6 Or

25

North

Between 27 5 28

4,000

Set hay mill

post from a

Bench 20 or 17 M 15

Sugar 20 or 45 8 13

79,00

Bench 30 1 1/2

80,00

Set post corner

of the 21, 22 27 or 28

from a Bench 78

or 72 M 30 M

Living wood

6 or 8 or 39 M

Land the same

26

P2MS6V

East Between 22327

2,25 on random

40,00 Drove 30 lbs

20,00 Set trap for port

Intersected by
line 10 lbs south
of corner land
the same

West Between 22827

40,00 on true line

Set post at aver-

age distance

in line to

for just corner

from a bush

8 m 76 M 20 M

Wolm 12 57 6

North 4000 Between 21322

Set trap mile

post from a

bush 10 S 93 M 42

Dogwood 8 on

21 M 10

20,00

Set post corner

of 21, 22, 13 91 6

from which a line

and 8 m 80 6 14 M 6 4

12 M 74 M 14 M

Land with

Live Oak

ash oak hick

Cec

R 2 M J 6 U

Eoth Between 15 & 22

~~on road~~

4000 Set line for 1/2

See past

7400 Brush 10 South

8004 In line at 10 & 20
line 10 South of the
corner same the same

West Between 15 & 22

on line

4002 Set post at average distance

for 1/2 mile

from a bush

10 W 32 N 12 Poplar

8 182 10 16

8004 See ~~road~~

R 2 M J 6 U

North Between 15 & 16

4000 Set line mile

just from a

poplar 8 182 16

50 6 W 11 N 13

Line the same

the same

3000 Set post corner

of 15 16 10 & 9

from a bush

20 N 31 W 11

Sugar 12 182 34

Land Kick

In the

same

(30)

B 2 M I 6 on

E. at

Between 12 & 15 on
inside corner

4000

Set temporary post

width

9,50

40,00

80,12

In first section or 9

South line at

Section corner

Land the same

West

Between 10 & 15

4906

Set post at aver
age distance

80,00

farther corner

from a Bench 10

12 & 18 sugar

12 & 18 & 37

80,12

In corner

B 2 M I 6 on (31)

Between 9 & 10

Bench 20 In 10

Set hay mile

post from a

Bench 6 & 34 M 13

Bench 8 & 51 62

Links

Set post corner

at 10, 9 374

from a sugar

at 12 or 5 & 15

12 or 5 7 M 3 M

Land the same

(32)

P 2 M J 6 or

Cost Between 3510 on

random

4000 Set temporary post

80,00 Intersected by

line ~~at~~ in

common land

the same

West Between 3810

4004 Set post at aver

age distance

for the common

from a Highway

6 50 5 M 9 Sugar

20 418 27 M

80,00 In common

(33)

P 2 M J 6 or

North Between 384

4000 Set hay mill

last from a

Sugar 10 55 M 49

Buck 12 North 40 M

beach course 25 M

75,00 Set post on the

87,00

North boundary

247 M 60 40 in

common from a

Sugar 12 528 M

27 Sugar 10 5532

25 links land

the same

April 11th 1814

34

P 2 M I 6 U

North Between 33932

4000 set hay mill

Post from

M red nut 6 vrs

M 22 sugar 30 vrs 5 m

24

5400 Spring West

3000 set post corner

of 3032 28179

from a sugar

~~from 28178 2~~~~from wood 8~~~~3032 22~~

Buck 20872 sugar

6 vrs 32 18

Land Hilly Dir

Oak & Hickory

P 2 M I 6 U (35)

East Between 28933

on random

4000 set temporary post

8000 Filler in the vrs 45

line 12 lbs North

of the corner

Sand the same

West Between 28533

4004 set post at corner

age distance for

from corner

Buck 10 vrs 71

E 26 D 20 5608

15 lbs

3000 Dir corner

(36)

R2 M J 6 on

worth

4,00

Between 28 & 29

Brook 50 M S, M

4000

Set hay mile

Post for corn

Brook 12 S 320 & 42 M

Grain 18 340 M 3 bush

5900

Brook 18 M S, E

8000

Set post corner

in 28 29 20 & 21

from a Mark 18

N 74 M 12 Hickory

100 & 45 M 5

Land the same

R2 M J 6 on (37)

East Between 21 & 28 on

riverside

35,00

Brook 25 M South

4000

Set timbering post

8910

Indicated by a line

at same corner

Land the same

Met Between 21 & 28

4005

Set post at a

wage distance

for the corner

from a Brook

... 3 M 18 Sugar

8 & 89 M 3 1/2

80,05 in corner

(38)

North
46,00

R 2 M 16 or

Between 20 & 21

Set hay mill

Post from a

B Walnut 6 or 11 M

13 Dogwood 6 or 27 M

30 M. Lumber

Land Survey

80,00

Set post corner
of S of S 20 & 21, 16

8 17 from a sugar

20 & 30 M 13 M

Bank 10 or 15 M 10

Land Kirk

and Kelly

Terin Oak

Robertson

(39)

R 2 M 16 or

Post Between 16 & 21 or
ranger

4000 Set Lumber

Post

4240 Brook 10 South

8000 Intersected with
line 12 M South of
in corner Land the
Survey

Post Between 16 & 21 or
true line

4000 Set post at corner
of S of S 20 & 21

True line for
Juan corner from
a sugar 10 M 22

43 S 10.559 & 22

8000 In corner

B 2 M 16 W

North Between 16 17

4000 Set half mile

Post from

Bank 10 or 17 M 10

So do 15 M 20

Links —

8000 Set post corner
at 16 17 8 89from a ~~big~~
wood 6 or 75 M

12 M 16 or 16 17

or 82 B 21 —

Basid. Hillij

Hickory corner
of Oak

B 2 M 16 W

East Between 9 8 16 or

random —

4000 Set temporary post

8000 Intersected or 8 South

line 8 M South of

any corner land

the same

West Between 9 8 16 or

4000 Set post at aver

age distance

on true line

for post — corner

from a gum

12 550 E 5 Bank

18 567 M 16

8000 Set corner

(42)

B 2 M I 6 W

North

~~Between~~ 889

4000

Set hay mill

port from a

Aug or 12 or 18 59

Aug or 10 5 14 6 13

line

6200

Brook 25 16

8000

Set port corner

of 45 8 59 pin

a Brook 10 W 44

E 17 W 5 18 8 83

W 15 W

Land Same

B 2 M I 6 W (43)

East

Between 489

on road or

2200

Brook 20 W 5, M

4000

Set temporary port

7998

Inherited or 35

line at the corner

Land the same

West

Between 489

3999

Set port at a

range distance

for the corner

from a Brook

22 5 8 4 8 4 3 W 5 Aug

- or 6 5 9 10 8

7998

In corner

B2 M 9600

Voth's Back on Sn 31932

4000 Set trap near
 post from a
 Bush 10 or 338
 16 Maple 12 or 66 M
 21 ~~Larks~~

8730

Set post on the W.
 boundary 348 M
 East of Sn corner
 from a Bush 20
 32468 Boxwood
 6 323 M 36 M

Lane Lane
 April 12th 1874

B2 M 9600

Voth's Back on Sn 31932

4000 On an offset
 toward the
 East on a corner
 of a bush

8000

Set post corner
 of Sn 31,32 299
 30 from a Bush
 20 or 36 M 23 Maple
 12 or 75 33 M

Lane Hilly
 Lane Oak Valley

40

Q 2 M I 6 U

E 0th

Between in 29932
on random

4000

Set temporary post

7300

brook 50 M. South

80,000

Insensitized vs

skins at sugar corn

Land the same

M 2 A

Between 29932

40,000

Set post at a
age distance

for you - corn

from a sugar

10 885 E 68 M Hickory

10 887 M 103 M

80,000

on corn

Q 2 M I 6 U

40

E 0th

Between 29930

3750

M Oak 20 Ins Dr

40,000

Set half mile post

for you - corn

from a sugar

10 or 38 37 Bay

wood 8 or 13 M

38 links

80,000

Set post corner

of in 19.20 29930

from a bush

8 574 M 18 M

Sugar 12 or 53 M

8 M

Land the

same

B 2 M 96 V

East Between 20829 and

4000 Set Thompson post

8012 Intersected at 90
line at the
corner same
the same

West Between 2029

4000 Set post at aver-
age distance for
from corner from
a Bench 12 S 82 M
27 S. S. W 63 E
20 M

8012 Set corner

B 2 M 96 V

North Between 10820

4000 Set hay mile

post from a
~~Bench 12 S 82 M~~

~~20 S 73 E 19 S~~
Bench 12 In Diam
Bears East 1 link
Set back

8000 Set post corner
of S. 17 48 14 920

from a Hickory

20 S 73 E 19 S
wood 4 M 39 E
8 links

Set the same

(50)

B 2 M J 6 U

East Between in 17820
 on road
 4000 Set lamp post
 8000 Intervall
 & line at
 corner land
 the same -

West Between in 17820
 8000 Set post at
 average distance
 for your corner
 from a Bench
 10 320 8 11 Sugar
 10 340 M 9

8000 In corner

North Between 17818

4500 ~~Brook 25 1/2 M~~

4000 Set hay mill
 post from a
 Bench 20 343 M 14

Lyman 12 U 27 M

20 lbs -
 Brook 25 1/2 M

7600 Set post corner
 8000 of in 17, 13 748

from a Bench
 12 348 8 2 lbs

Sugar 4 331 M

15 lbs ~~Sugar~~

~~7 1/2 M 12 lbs~~

~~Brook 25 1/2 M~~

Land same

R 2 M I 6 U

East East Between 891
on road

450 Brook 26.5 M

4000 Set temporary post

8000 Intersected by skin

to the south of the
corner land the
sameWest Between 8817 on
true line4000 Set post at aver-
age distance
on true line for
true cornerfrom a ~~point~~
~~4400 22 Aug 40~~

21 M 15 Logwood

8000 20 or 21 M 15 20 16 15 8
Set corner

R 2 M I 6 U

North Between 798

4000 Set hay mow

post from road

from road 65

16 9/15 Aug 12 ~~14 M 79~~

Lands

8000 Set post corner
of the 561788
from a bench
by 4800 22 Aug
wood 6 38 M
7th

Land the same

54

B 2 M I 6 U

Eort Between 5-48

on random

37.00 Brook from a

40.00 Spring 5th

Set temporary port

80.08 Inlets into W.

of Shire at S

common —

Mth Between 5-48

40.04 Set foot at an

age distance

for your common

from a Brook N

S 51 E 12th Sugar

12 or 37 M p

80.08 In common

55

B 2 M I 6 U

North Between 5-48

34.50

40.00

Brook 20 feet S

Set hay mill

port from a M

ash 6 S 4 E 10 Hick

Fay 10 or 76 M p

87.98

Set port on the S

boundary 3,98 East

of S common from

a gum 20 N 86 E

13th Dogwood

6 N 66 E 10th

Land Hilly and

very brushy

Timber Oak Hickory

Poplar etc

April 13 1884

No 2 M J 6 U

West Between 697

4000 Set hay mile

post from a

Sugar 8888

20 Bush 20

West 35 lbs

6974 Set post on the

West bound

468 lbs South of

An corn from

a Daywood 6

841 & 97 lbs Bush

6 South 2 lbs

Land the

Land

No 2 M J 6 U

West Between 7878

1,500 Bush 12 2nd Diam.

4000 Set hay mile post

froma Bush 8

178 M 14 lbs 8010

875 & 13 lbs

Lestank

7276 Set post on the

west boundary 375

south of an corn

froma Bush 10

M 43 M 18 Maple

8 8438 10 lbs

Land. Hilky. Lemo

Oak & Hickory

B 2 M J 6 C

West Between 18819

29.50 Bush 20 Ins

4000 Set post from
Bush 10
a 78 E 48 lbs

maple 20 or 61 to 28

5000 Brook 100 lbs 1/2 E

74.80 Set post on the
West boundary

380 lbs South

74.80 open corn from
a Bush 10 South

14 Hickory 12

345 M 12 lbs

Land this same

B 2 M J 6 W

West Between 19430

4000 Set hay into
post from a

Bush 6 S 75 M 6

Bush 12 or 42 E

12 lbs

76.00 Set post on the
West boundary

200 lbs South of

in corn from

a Bush 20 or 66

24 Sugar 8 S 10

E 16 Land Kelly

Senior Oak & Hickory

R 2 M S 1 W

West Between in 30831

2300 Buck 14 feet

4400 Set hay wire

rust from a

Aug or 12 N 60

E 35 Buck 20

N 26 E 8 lbs

7600 Set post on the

West boundary

50 lbs South of

in corner from

a Hickory 10

S 25 E 13 Buck

12 188 E 35 lbs

Land Ruler Jim

The Survey

April 14th 1814

3,48

2,48

1,70

1,72